

SERVICE INSTRUCTIONS

www.keatingofchicago.com

KEATING
OF CHICAGO, INC.®

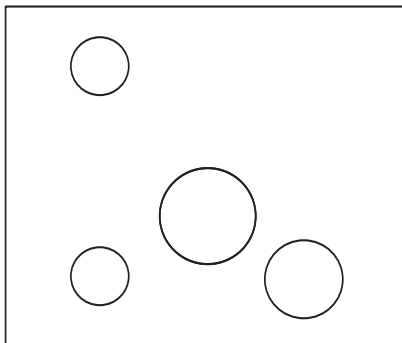
1-800-KEATING

MOUNTING INSTRUCTIONS FOR REPLACING HI-LIMIT CONTROL #004341 (BACK MOUNT) WITH #034357 (BOTTOM MOUNT) FOR IFM & GAS FRYERS & PASTA COOKERS

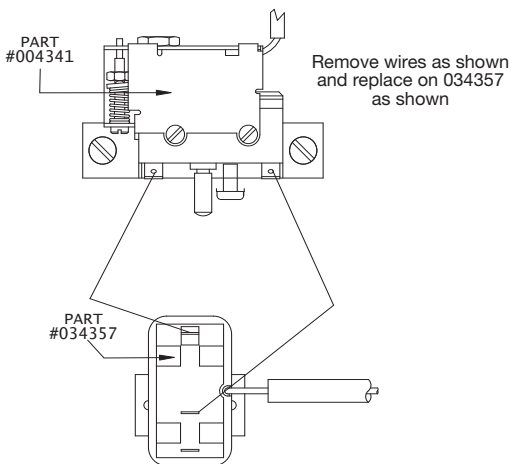
1. Line up template with reset button clearance hole in bottom of control panel back. Hold in place & mark hole centers.
2. Drill (2) $\varnothing 0.201$ (#7) holes.
3. Drill (1) 0.413 hole.
4. Install new hi-limit control using (2) #8-32 x $\frac{1}{4}$ " screws (part #017744).

TEMPLATE

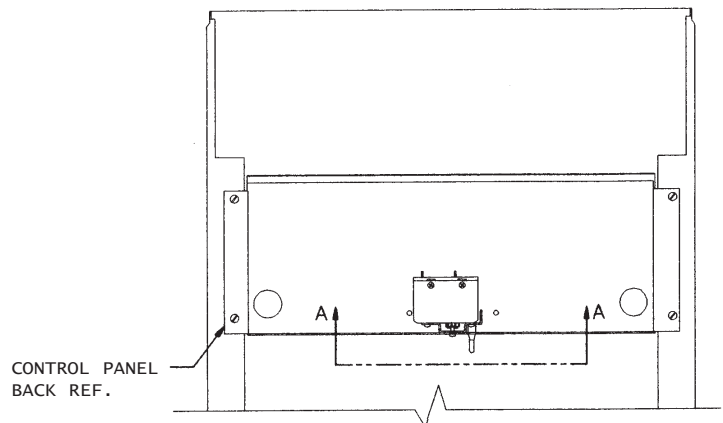
Align the center hole of the template below with the existing reset button hole in the control panel back. Drill the 3 needed holes. See View A-A.



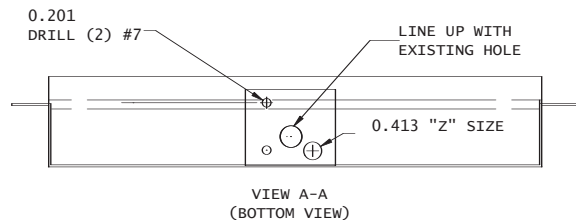
WHEN REPLACING 004341 WITH 034357



FRONT VIEW OF FRYER OR PASTA COOKER
WITH CONTROL PANEL REMOVED



LINE UP TEMPLATE ON EXISTING HOLE AS SHOWN.
DRILL (2) .201 #7 HOLES AND (1) .413 "Z"



HI-LIMIT RESET BUTTON

If the Hi-limit has been activated, press the red button to reset after the oil cools.

The red button is located under the control panel.

SERVICE INSTRUCTIONS

www.keatingofchicago.com

KEATING
OF CHICAGO, INC.®

1-800-KEATING

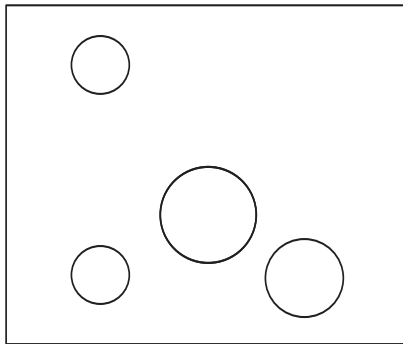
MOUNTING INSTRUCTIONS FOR REPLACING HI-LIMIT CONTROL #025584 (BACK MOUNT) WITH #034357 (BOTTOM MOUNT)

FOR IFM & GAS FRYERS & PASTA COOKERS

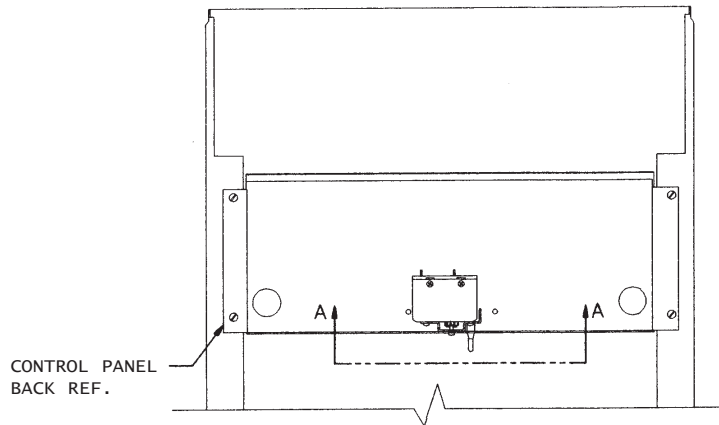
1. Line up template with reset button clearance hole in bottom of control panel back. Hold in place & mark hole centers.
2. Drill (2) Ø0.201 (#7) holes.
3. Drill (1) 0.413 hole.
4. Install new hi-limit control using (2) #8-32 x 1/4" screws (part #017744).

TEMPLATE

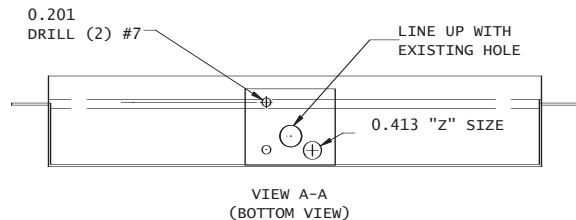
Align the center hole of the template below with the existing reset button hole in the control panel back. Drill the 3 needed holes. See View A-A.



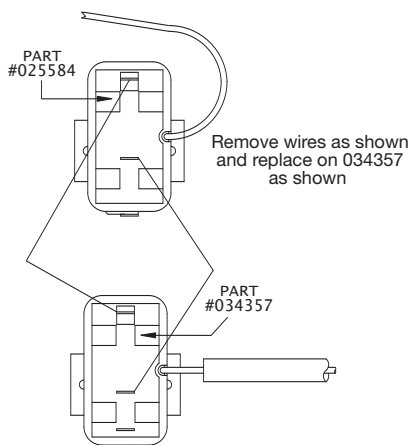
FRONT VIEW OF FRYER OR PASTA COOKER
WITH CONTROL PANEL REMOVED



LINE UP TEMPLATE ON EXISTING HOLE AS SHOWN.
DRILL (2) .201 #7 HOLES AND (1) .413 "Z"



WHEN REPLACING 025584 WITH 034357



HI-LIMIT RESET BUTTON

If the Hi-limit has been activated, press the red button to reset after the oil cools.

The red button is located under the control panel.