

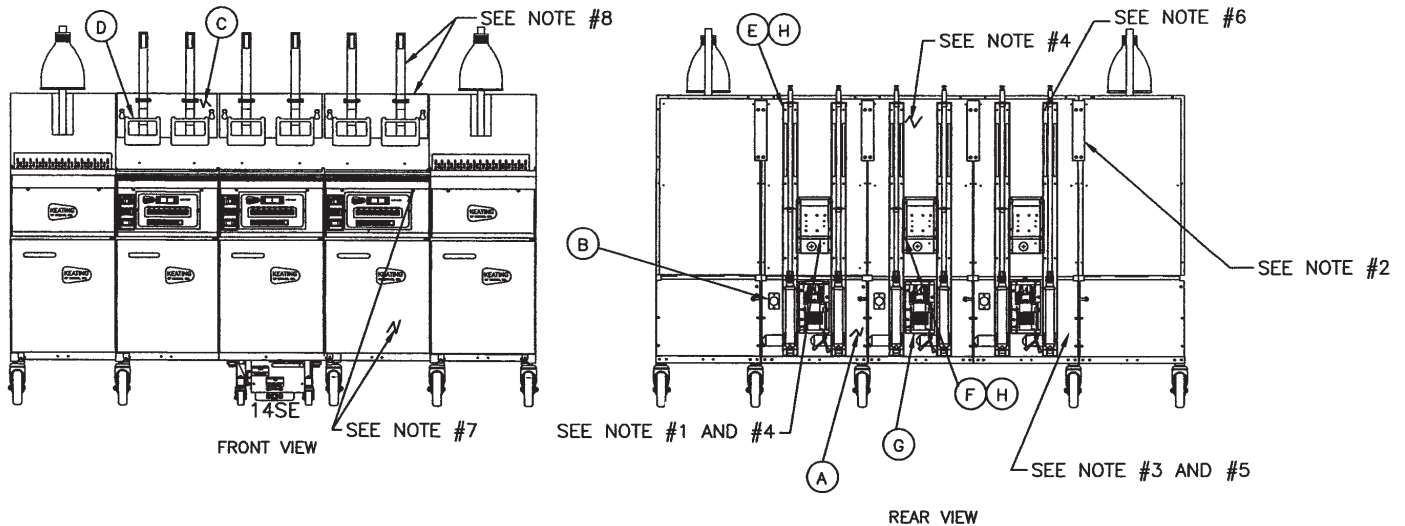
# SERVICE INSTRUCTIONS

www.keatingofchicago.com

**KEATING**  
OF CHICAGO, INC.®

1-800-KEATING

## Basket Lift Field Installation Instructions



### Assembly Sequence

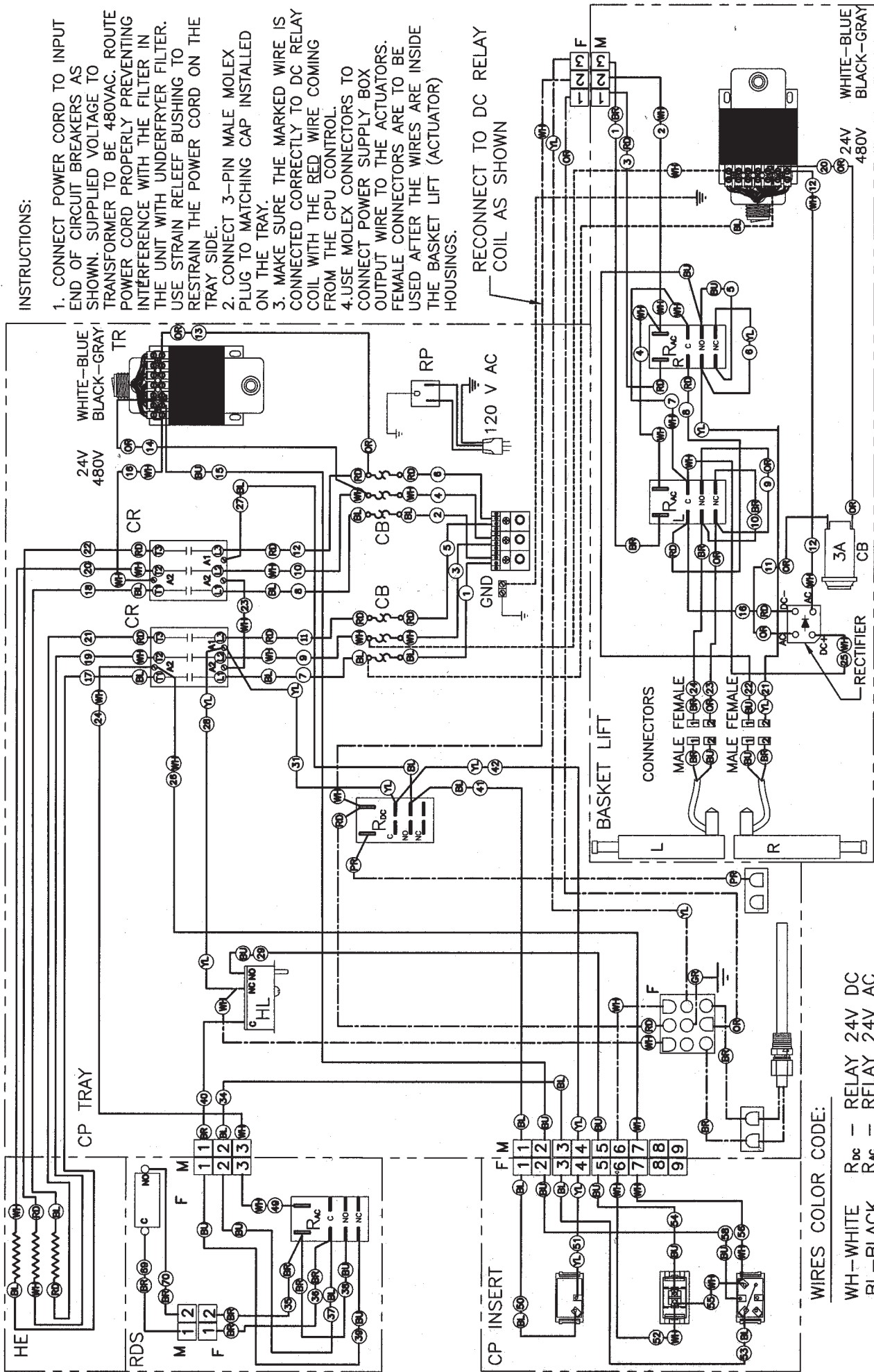
1. Disconnect electrical power from outside source. Remove electrical box cover and maintain hardware, discard cover. This cover will be replaced with item #F
2. Remove connection strips in (4) locations, retain strips and hardware.
3. Remove lower rear split cover and discard (do not discard hardware). This part will be replaced with item #A.
4. Drill through rivets to remove electrical box from split top covers. Remove split top covers (retain hardware) these covers will be replaced with item #I. Install existing electrical power supply to item #I with item #J and install to fryer with retained hardware.
5. Install items #A to fryers with retained hardware. NOTE: Item #G and item #B was installed to item #A at the factory, for convenience.
6. Remove cover from item #E, position these assemblies as shown in rear view. Attach item #E to rear cover using item #H. Align to holes in top of split rear covers. Slide lower pin from basket lift actuator to allow actuator to be rotated upward to allow for attachment of basket lift housing on the bottom of item #A using item #H.
7. Remove screws to lower front control panels and open fryer door to gain access for wiring corrections and connections according to diagram (item #K). Reassemble front control panel.
8. Remove the basket hangers and replace with item #C. Install item #D on each shaft as shown in front view.
9. Reconnect electrical power from outside source fryer.
10. Test basket lift operation. Buttons 1 to 4 will control left basket lift, 5 to 8 - right basket lift.

	PART NO.	QTY	DESCRIPTION
K	C0003573I	1	WIRING DIAGRAM 14 TS CPU
J	035063	18	RIVET
I	053591	3	CABINET BACK SPLIT TOP
H	011435	60	SCREW #10 X 1/2 SELF DRILL
G	055090	3	ASSY PWR SUPPLY BL CPU
F	055653	3	COVER PANEL ELECT
E	054509	6	SINGLE BASKET LIFT ASSY
D	054386	6	BASKET LIFT WELDMENT
C	054380	3	GUIDE ASSY. BASKET LIFT
B	055601	3	COVER REAR SE GAS/ELEC
A	054955	3	CABINET BACK SPLIT BOTTOM

**INSTRUCTIONS:**

1. CONNECT POWER CORD TO INPUT END OF CIRCUIT BREAKERS AS SHOWN. SUPPLIED VOLTAGE TO TRANSFORMER TO BE 480VAC. ROUTE POWER CORD PROPERLY PREVENTING INTERFERENCE WITH THE FILTER IN THE UNIT WITH UNDERFRYER FILTER. USE STRAIN RELIEF BUSHING TO RESTRAIN THE POWER CORD ON THE TRAY SIDE.
2. CONNECT 3-PIN MALE MOLEX PLUG TO MATCHING CAP INSTALLED ON THE TRAY.
3. MAKE SURE THE MARKED WIRE IS CONNECTED CORRECTLY TO DC RELAY COIL WITH THE RED WIRE COMING FROM THE CPU CONTROL.
4. USE MOLEX CONNECTORS TO CONNECT POWER SUPPLY BOX OUTPUT WIRE TO THE ACTUATORS. FEMALE CONNECTORS ARE TO BE USED AFTER THE WIRES ARE INSIDE THE BASKET LIFT (ACTUATOR) HOUSINGS.

RECONNECT TO DC RELAY COIL AS SHOWN



**WIRES COLOR CODE:**

- WH - WHITE
  - BL - BLACK
  - RD - RED
  - BU - BLUE
  - BR - BROWN
  - OR - ORANGE
  - YL - YELLOW
  - GR - GREEN
- R<sub>DC</sub> - RELAY 24V DC
  - R<sub>AC</sub> - RELAY 24V AC
  - CR - CONTACTOR 24V AC
  - HE - HEATING ELEMENTS
  - CB - CIRCUIT BREAKER
  - BL - BASKET LIFT
  - RDS - REAR DRAIN SWITCH

