

SERVICE INSTRUCTIONS

www.keatingofchicago.com

KEATING
OF CHICAGO, INC.®

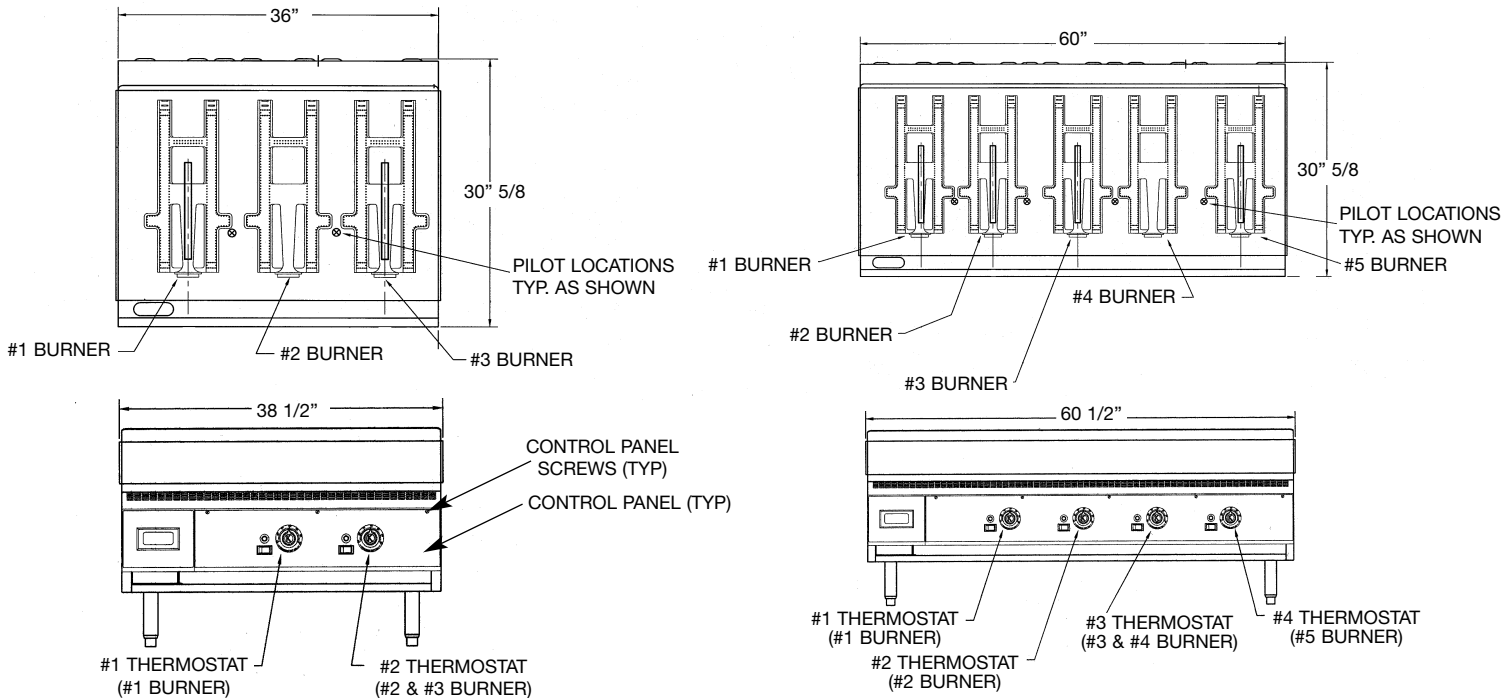
1-800-KEATING

MIRACLEAN® GAS GRIDDLE

Bob Evans
FARMS®

Gas Conversion

Gas Conversion is not covered under warranty.



NOTE: ALL DIMENSIONS ARE FOR REFERENCE ONLY

NOTE: ALL DIMENSIONS ARE FOR REFERENCE ONLY

Instructions

1. Turn supply gas off.
2. Remove & replace regulators on each gas valve. Follow instructions sent with regulators.
3. Lower control panel to gain access to main and pilot orifices.
4. 36" gas griddle: replace 2 pilot orifices and 3 main burner orifices. Install smaller burner orifice in center burner.
60" gas griddle: replace 4 pilot orifices and 5 main burner orifices.
5. Return pilot assemblies and manifolds to original position.
6. Reinstall control panel screws.
7. Turn on gas supply and test for proper operation.

If converting from Natural Gas to Propane, the following must be ordered:

36" Griddle

Part#	Qty	Description
002553	2	Gas Valve conversion kit Nat-LP
004248	2	Orifice Main Burner #53
005800	1	Orifice Main Burner #57 (Center Burner)
007766	2	Orifice Pilot LP

60" Griddle

Part#	Qty	Description
002553	4	Gas Valve conversion kit Nat-LP
004248	5	Orifice Main Burner #53
007766	4	Orifice Pilot LP

If converting from Propane to Natural Gas, the following must be ordered:

36" Griddle

Part#	Qty	Description
002554	2	Gas Valve Conversion Kit LP-Nat
011743	2	Orifice Main Burner #39
005807	1	Orifice Main Burner #49 (Center Burner)
007696	2	Orifice Pilot Natural

60" Griddle

Part#	Qty	Description
002554	4	Gas Valve Conversion Kit LP-Nat
011743	5	Orifice Main Burner #39
007696	4	Orifice Pilot Natural