

SERVICE INSTRUCTIONS

part# 059989

www.keatingofchicago.com

KEATING
OF CHICAGO, INC.®

1-800-KEATING

FIELD REPLACEMENT KIT FOR SECONDARY GAS SOLENOID PART# 037033 PART# 059988 FOR MODELS 18", 20" & 24"

YOUR KIT INCLUDES:

- ▶ Replacement Solenoid
- ▶ Replacement Instructions

027134	4	WIRE NUT, GREY
013118	2	WIRE NUT, BLUE
013540	2	BUSHING – ANTISHORT
005651	2	CONDUIT BOX CONNECTOR 3/8" × 90°
022245	1	CONDUIT FLEX 7/16" × 20" LONG
038178	1	SOLENOID VALVE PASTA CENTER BURNER

PREPARE THE UNIT:

1. Drain the water from the pasta unit.
2. SHUT OFF GAS AT THE MAIN SHUT-OFF VALVE TO THE PASTA UNIT.
3. DISCONNECT ELECTRICAL POWER TO THE PASTA UNIT.
4. Remove 2 screws securing the water level control box to the pasta frame and allow the water level control box to hang by the conduit.
5. Remove the overflow copper tube drain line.
6. NOTE: For the 18" and 20" pasta units—remove the 2 screws at the base of the two outer burners. Remove the 3 burners from the pasta as a unit. For the 24" pasta

continued on page 2

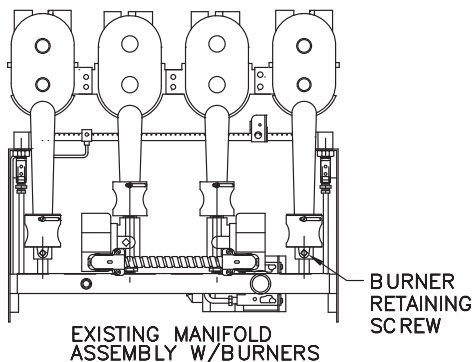


FIG. 1

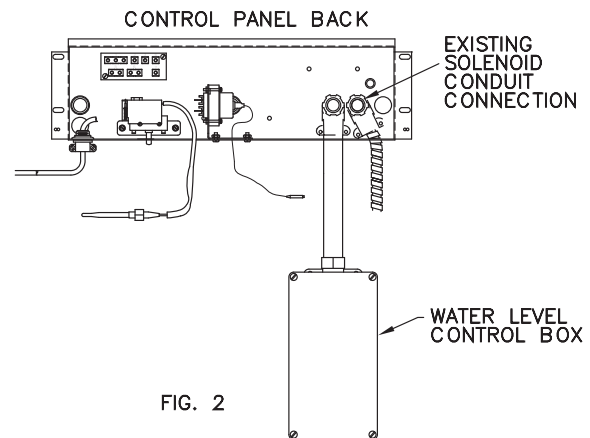


FIG. 2

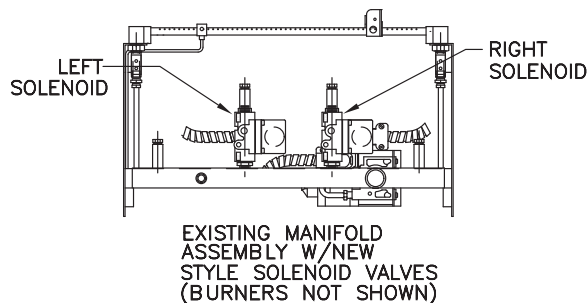


FIG. 3

SERVICE INSTRUCTIONS

part# 059989

www.keatingofchicago.com

KEATING
OF CHICAGO, INC.®

1-800-KEATING

FIELD REPLACEMENT KIT FOR SECONDARY GAS SOLENOID PART# 037033 PART# 059988 FOR MODELS 18", 20" & 24"

unit—remove the 2 screws at the base of the two outer burners and one center burner. Remove the 5 burners from the pasta as a unit. Retain the screws for burner re-installation.

7. Remove junction box covers from both solenoid valves. Label the solenoid valve wire and connections.

CASE 1: REPLACING THE LEFT SOLENOID VALVE (THE SUPPLIED CONDUIT IS NOT USED):

1. Disconnect wires and flexible conduit from the LEFT valve assembly.
2. Remove solenoid valve.
3. Remove the pipe bushing 3/8" x 1/4" black face, orifice holder 1/4" x 1-1/4" pasta, and the orifice burner #36. Re-install these components on the new solenoid valve, output end ("OUT").
4. Locate the WHT and BLK wires that were connected to the LEFT valve. Cut each wire about 3" from RIGHT valve connections (*leave the original wires connected to the valve in place*), strip 3/8".
5. Remove the short conduit connecting the original two valves together from RIGHT valve junction box, and discard the original two wires connecting the LEFT valve.
6. Feed the new valve wires through this conduit, and secure the conduit connector to the new valve housing; twist to hand tight. Make sure the plastic bushing is in place on the conduit before securing to the valve.
7. Re-install the conduit and new valve wires to the RIGHT valve junction box. Cut the new valve wires to remove excess length, strip 3/8" and use the supplied wire nuts to secure to the existing BLK and WHT wires. Be sure to match wire colors. For standard gas Pasta products, refer to Figs. A (original wiring) and B (new valve wiring) for guidance. For gas units with spark module installed, refer to Figs. D (original wiring) and E (new valve wiring). Make sure the plastic bushing is in place on the conduit before securing to the valve.
8. Re-install the junction box cover and skip to the RE-ASSEMBLE THE PASTA UNIT section.

CASE 2: REPLACE RIGHT SOLENOID VALVE

1. Disconnect wires and flexible conduit connectors from both boxes.
2. Remove the Pasta Control Panel to expose the Control Panel Back components. Be careful not to damage any Panel components.
3. In the Control Panel Back, locate the WHT wire from the solenoid valve conduit connected to Terminal Board, terminal #1. Cut this wire about 4" from the terminal board and strip end 3/8".
4. Locate the BLK wire from the conduit connected to the #2 thermostat in standard units, or to the #6 position in the 12-position connector used on spark module-equipped units. Cut this wire about 4" from its termination and strip 3/8".
5. Pull the loose wires out of the conduit.
6. Remove the conduit from the Control Panel Back.
7. Remove the RIGHT solenoid valve assembly from the unit.
8. Remove the pipe bushing 3/8" x 1/4" black face, orifice holder 1/4" x 1-1/4" pasta, and the orifice burner #36. Re-install these components on the new solenoid valve, output end ("OUT").
9. Run the new valve's BLK and WHT wires up through the original conduit out the Control Panel end.
10. Twist the conduit onto the new valve and hand-tighten. Make sure the plastic bushing is in place on the conduit before securing to the valve.
11. Install the new valve onto the manifold frame in the same location as the original. The valve orientation is parallel to the frame. (See Fig. 3)
12. Route the loose wires into the Control Panel Back and secure the conduit connector back in place on the Control Panel Back.
13. Install the supplied conduit (with wires pre-installed) and connectors between the LEFT solenoid valve junction box and an available hole in the back of the Control Panel Back. If no hole is available, drill a 7/8" hole in a clear location that will accommodate the conduit connector.

continued on page 3

SERVICE INSTRUCTIONS

part# 059989

www.keatingofchicago.com

KEATING
OF CHICAGO, INC. ®

1-800-KEATING

FIELD REPLACEMENT KIT FOR SECONDARY GAS SOLENOID PART# 037033 PART# 059988 FOR MODELS 18", 20" & 24"

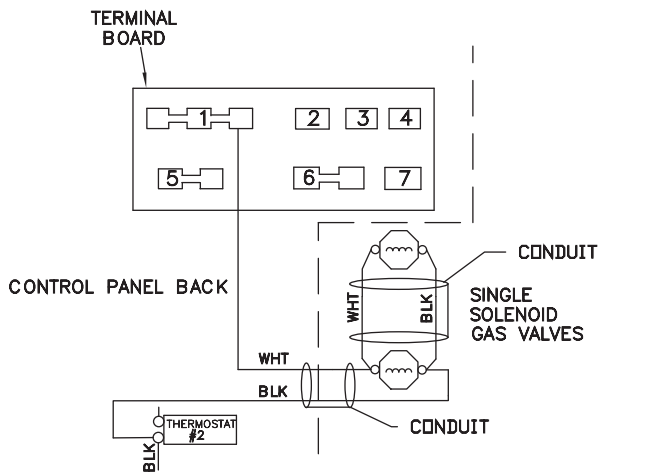


FIG. A ORIGINAL VALVE HOOK-UPS

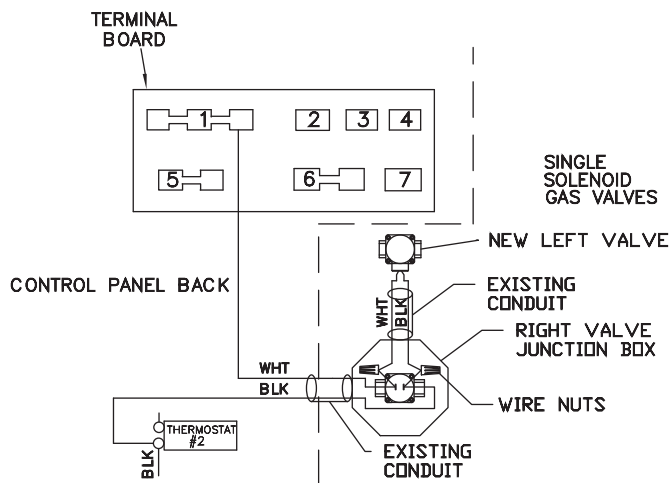


FIG. B NEW LEFT VALVE HOOK-UP

14. Connect the wires to the LEFT solenoid valve and re-install the junction box cover.
15. Use the supplied wire nuts to connect the three WHT wires from the Control Panel Back and each solenoid valve. Repeat for the three BLK wires. Refer to Fig. C for standard Pasta units, and Fig. F for units equipped with a spark module as a guide.

RE-ASSEMBLE THE PASTA UNIT:

1. Re-install the control panel back and control panel. Be careful not to damage any panel components.
2. Install the burners in the original position. Secure in place with the retained screws.
3. Install the drain valve and drain tube.
4. Install the overflow copper tube drain line.
5. Install 2 screws to secure the water level control box to the pasta frame.
6. Connect the pasta unit to electrical power.
7. Turn on the gas the main shut off valve to the pasta unit.
8. Check operation of the pasta unit by operating the unit per the instructions in section 3 of the Service Manual.

continued on page 4

SERVICE INSTRUCTIONS

part# 059989

www.keatingofchicago.com

KEATING
OF CHICAGO, INC.®

1-800-KEATING

FIELD REPLACEMENT KIT FOR SECONDARY GAS SOLENOID PART# 037033 PART# 059988 FOR MODELS 18", 20" & 24"

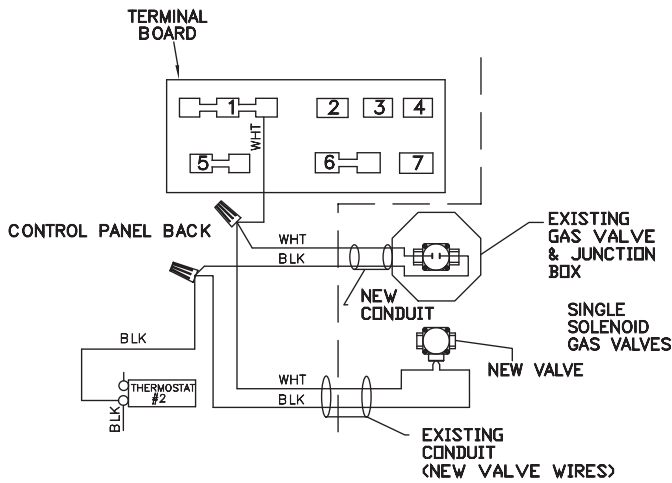


FIG. C NEW RIGHT VALVE HOOK-UP

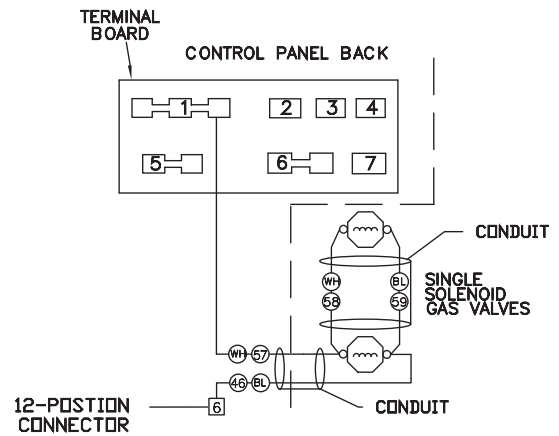


FIG. D ORIGINAL VALVE HOOK-UPS

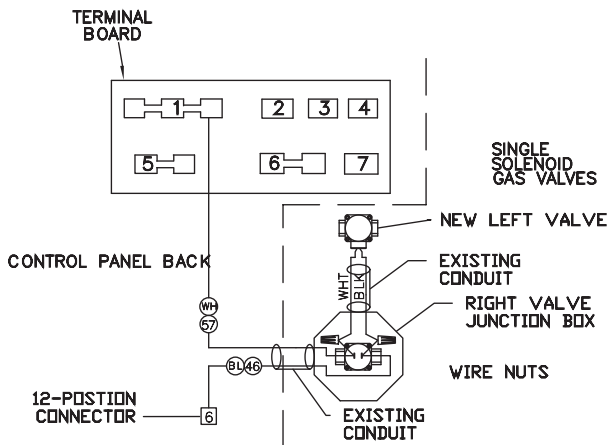


FIG. E NEW LEFT VALVE HOOK-UP

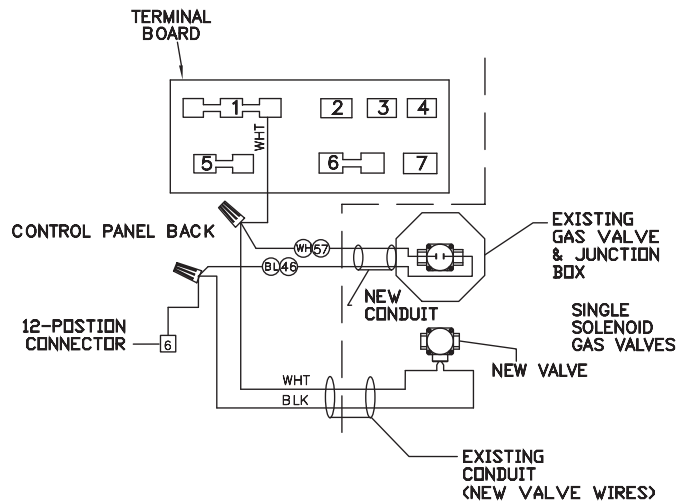


FIG. F NEW RIGHT VALVE HOOK-UP